

# Apacer

The Most **Reliable**  
Storage For Industries

PV250-CFX



### Overview

Apacer Industrial CFexpress PV250-CFX is the next generation Solid State Drive (SSD), providing full compliance with PCIe Gen4 x2 interface and NVMe 2.0 specifications. This allows it to operate in power management modes, greatly saving on power consumption. Built with a powerful PCIe controller that supports on-the-module ECC as well as an efficient wear-leveling scheme, PV250- CFX delivers exceptionally low latency and outstanding performance in data transfer. With its compact design and high-speed storage capabilities, PV250-CFX is the ideal choice for larger, faster hosts deployed in a wide range of applications that demand outstanding performance.



Utilizing 3D NAND technology for higher capacities up to 960GB and offering superior power efficiency compared to 2D NAND, PV250-CFX is equipped with advanced features to enhance SSD performance and reliability. It incorporates an LDPC (Low Density Parity Check) ECC engine to extend SSD endurance and enhance data reliability. Additionally, the SSD is equipped with a built-in thermal sensor that utilizes S.M.A.R.T commands to monitor temperature, along with thermal throttling functionality that dynamically adjusts frequency scaling to maintain optimal performance and prevent overheating. For demanding applications, PV250-CFX also features End-to-End Data Protection, which safeguards data integrity at multiple points along the data transfer path, enabling dependable delivery of data transfers.

From a security standpoint, the Advanced Encryption Standard (AES) and Trusted Computing Group (TCG) Opal (optional) safeguard data, providing users with confidence that their data is protected against unauthorized access. PV250-CFX incorporates various features, including flash block management, page mapping, DataDefender, TRIM, over-provisioning, SMART Read Refresh, and power saving modes.

With exceptional performance, trustable reliability, and enhanced data protection, PV250-CFX is definitely the ideal storage or cache solution for a variety of applications ranging from industrial, imaging, computing to enterprise markets.

## Feature

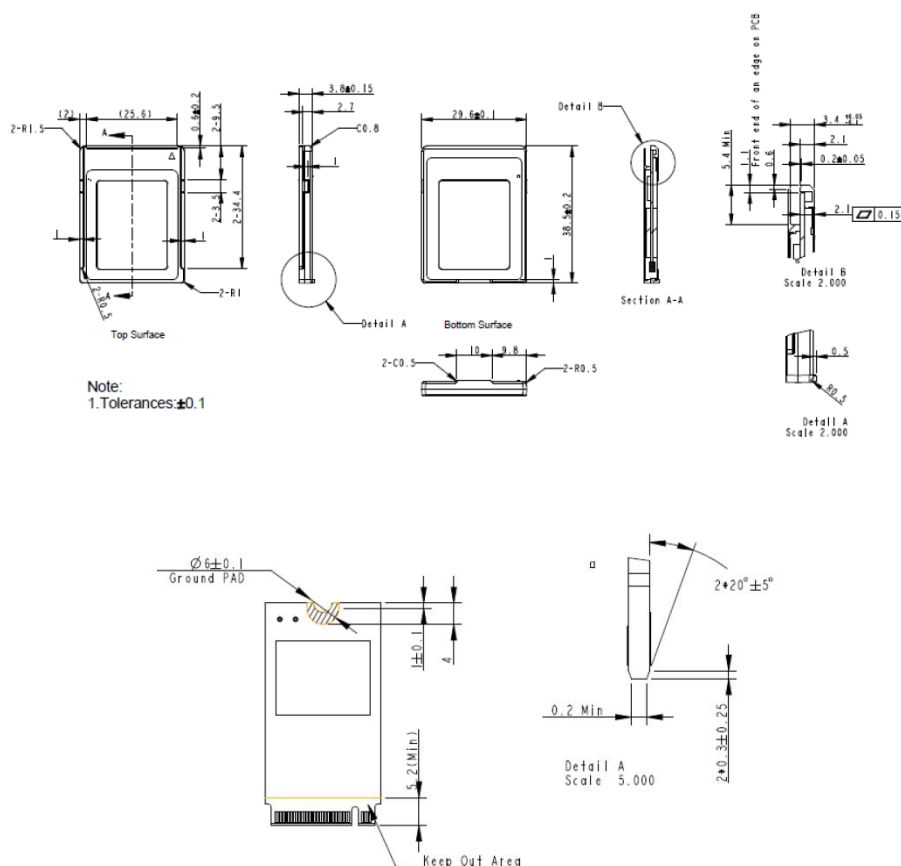
- Low-Density Parity-Check (LDPC) Code
- Global Wear Leveling
- Flash bad-block management
- Flash Translation Layer: Page Mapping
- S.M.A.R.T.
- TRIM
- Over-provisioning
- SMART Read Refresh™

## Specifications

Model	PV250-CFX
Interface	PCIe Gen4x2
Connector	-
Form Factor	CFexpress 2.0 Type B
NAND Flash Type	3D TLC
Capacity	120GB-960GB
External DRAM	No
Sustained Read Performance (MB/sec)	Up to 3,740
Sustained Write Performance (MB/sec)	Up to 3,020
ECC Engine	Low-Density Parity-Check (LDPC) Code
IOPs (4K Random Write)	569K
Standard Operating Temperature ( °C )	0 ~ + 70
Extended Operating Temperature ( °C )	-40°C to 85°C
Storage Temperature ( °C )	-55 ~ + 100
Housing	No
Thermal sensor	Yes
Shock	Operation: Acceleration, 50(G)/11(ms)/half sine (compliant with MIL-STD-202G) Non-operation: Acceleration, 1500(G)/0.5(ms)/half sine (compliant with MIL-STD-883K)
Vibration	Operation: 7.69 GRMS, 20~2000 Hz/random (compliant with MIL-STD-810G) Non-operation: 4.02 GRMS, 15~2000 Hz/random (compliant with MIL-STD-810G)
Operating Voltage	3.3V ±5%
Power Consumption	Active mode: 1130 mA / Idle mode: 155mA
Dimension (L x W x H )	29.60 x 38.50 x 3.80(max.)
MTBF (hours)	>3,000,000

## Mechanical Specification

Parameter	Unit	240 GB	480 GB	960 GB
Length	mm	$38.50 \pm 0.20$		
Width		$29.60 \pm 0.10$		
Height		$3.80 \pm 0.15$		
Weight	$g \pm 5\%$	6.3	6.3	6.43



For more information,  
contact your Apacer representative

### Global Presence

Taiwan (Headquarters)  
Apacer Technology Inc.  
Tel: +886-2-2267-8000  
Fax: +886-2-2267-2261

Europe  
Apacer Technology B.V.  
Tel: +31-40-267-0000  
Fax: +31-40-290-0686

U.S.A.  
Apacer Memory America, Inc.  
Tel: +1-408-518-8699  
Fax: 1-510-249-9551

Shanghai  
Apacer Electronic(Shanghai)  
Co., Ltd.  
Tel: +86-21-6228-9939

Japan  
Apacer Technology Corp.  
Tel: +81-3-5419-2668  
Fax: +81-3-5419-0018

India  
Apacer Technologies Pvt. Ltd.  
Tel: +91-80-41529061~3  
Fax: +91-80-41700215